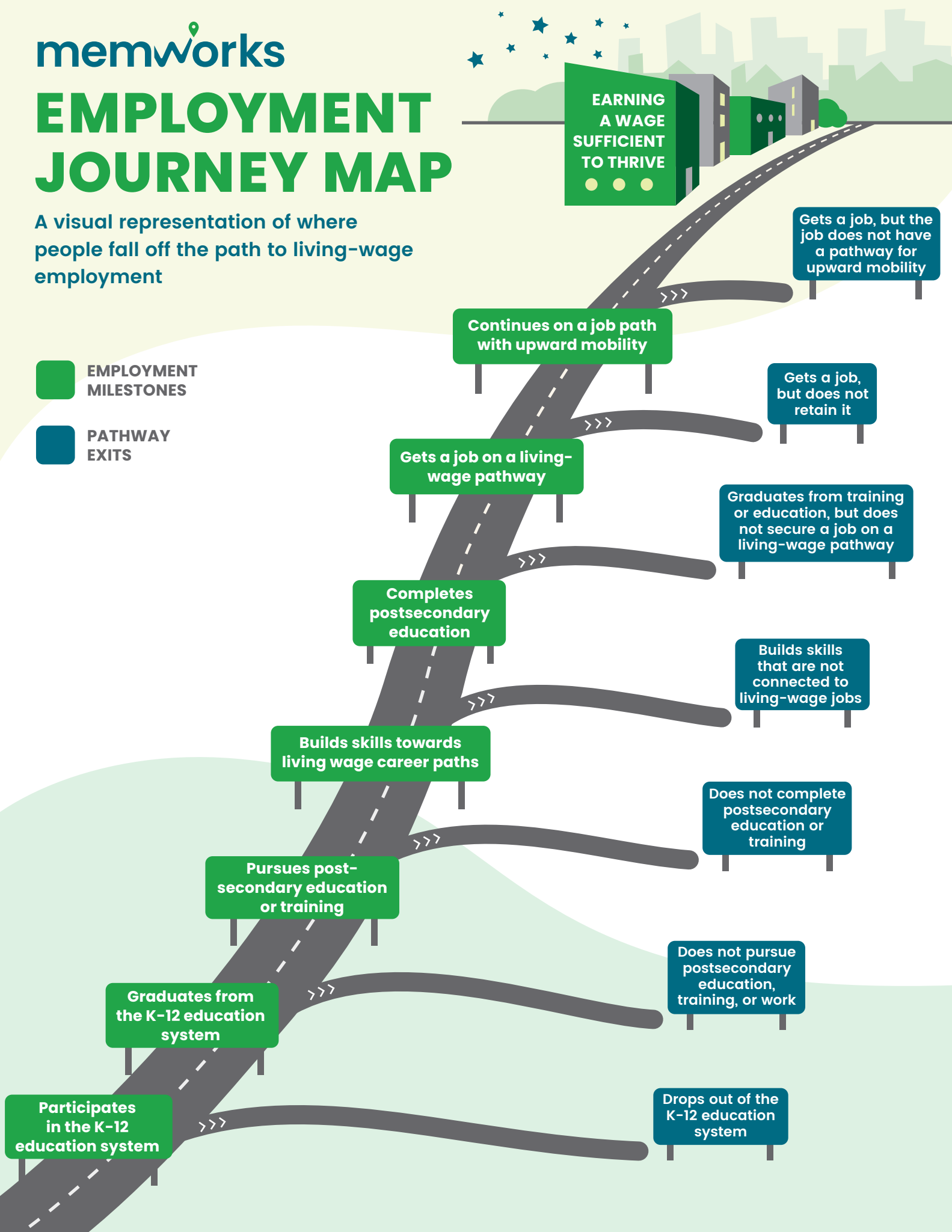


EMPLOYMENT JOURNEY MAP

A visual representation of where people fall off the path to living-wage employment

EMPLOYMENT MILESTONES

PATHWAY EXITS



Participates in the K-12 education system

Graduates from the K-12 education system

Pursues post-secondary education or training

Builds skills towards living wage career paths

Completes postsecondary education

Gets a job on a living-wage pathway

Continues on a job path with upward mobility

EARNING A WAGE SUFFICIENT TO THRIVE

Drops out of the K-12 education system

Does not pursue postsecondary education, training, or work

Does not complete postsecondary education or training

Builds skills that are not connected to living-wage jobs

Graduates from training or education, but does not secure a job on a living-wage pathway

Gets a job, but does not retain it

Gets a job, but the job does not have a pathway for upward mobility